

HENDRX[®]
KNOW WHAT YOU'RE DRINKING!

Water Harvester



WATER GENERATOR/DEHUMIDIFIER/AIR FILTER

Owners Manual



Pure Water From
THIN AIR....

No Water Source
NECESSARY!

**Pure,
Clean and Safe....
for the first time EVER....
know EXACTLY
what you are drinking**

www.watersourcetechnologies.com



877-860-1106



OWNER'S MANUAL



Contents

OPERATING YOUR ATMOSPHERIC WATER APPLIANCE.....	6
INTRODUCTION.....	6
SAFETY NOTES.....	6
PRECAUTIONS.....	7
MAINTENANCE.....	7
WHAT AN ATMOSPHERIC WATER APPLIANCE DOES FOR YOU!.....	8
FEATURES OF THE ATMOSPHERIC WATER APPLIANCE.....	8
Microcomputer.....	8
Electronic Sensors.....	8
Energy Saving Features.....	8
Child-Proof Hot Water Lock Out.....	8
Venturi Fan.....	8
Water Leakage Detector.....	8
Condensing Coils.....	9
Electrostatic Air Filter.....	9
Ultraviolet Treatment.....	9
Multi-Stage Filtration System.....	9
LF2 Carbon Filter or Nanometer Molecular Sieve.....	9
Sediment Filter.....	9
Oxidation Reduction Filter I.....	9
Oxidation Reduction Filter II.....	9
Reverse Osmosis Membrane.....	9
Post-Carbon Filter.....	9

OWNER'S MANUAL

Top Tank UV Sterilization	9
Water Output UV Sterilization	10
Water Recirculation	10
Overheat Protector	10
Novel and Noble Body	10
Understanding the Visual Function Display (VFD)	12
OPERATION	13
Each time the Water Harvester is plugged in	13
Turn off the appliance	13
Turn on the appliance	13
Activate Hot Water	13
Deactivate Hot water	13
Activate Chilled water	13
Deactivate Chilled water	13
Setting the temperature of the hot and chilled tanks	13
Switching between Celsius and Fahrenheit	14
Filter/ UV Replacement- no service agreement	14
Filter/UV Replacement- Service agreement	14
Connecting to a municipal water system.....	14
Defrost	14
Dispense Chilled Water	15
Dispense Hot Water	15
Energy Efficiency	15
CLEANING AND REPLACEMENT OF FILTERS	15
System Cleaning	16

OWNER'S MANUAL

Clean the Air Filter.....	16
Cleaning of water collection tray.....	16
Cleaning of bottom tank.....	17
Cleaning of Front filtration system.....	17
Sterilization.....	18
Parts Replacement.....	19
To replace a filter:.....	19
Replace the top main tank UV lamp.....	19
Replace the dispensing water UV lamp.....	19
Attention.....	19
TROUBLE SHOOTING.....	20
Problem: No hot or chilled water.....	20
Problem: The UV WARNING light blinks and you hear three short beeps.....	20
Problem: The whole UV WARNING logo  blinks and you hear three short beeps.....	20
Problem: The machine does not work even after the power cord is plugged in.....	20
Problem: The indicator  "REPLACE" on VFD display is blinking and beeping.....	20
Problem: The system detected water leakage on the base. The red logo.....	20
Problem: Remaining water cannot be drained out from the back outlets.....	21
Problem: There is a burning smell from the machine.....	21
Problem: Water output from faucet is too small.....	21
Problem: No hot or cool water output,.....	21
Problem: the Water Harvester makes water at a slow rate.....	21
Problem: The humidity indicator on the screen is different from the actual room humidity level.....	22
Problem: The machine is vibrating excessively and/or too noisy.....	22

OWNER'S MANUAL

Technical Specifications Dimensions	23
Power	23
System Specifications.....	23
Contact Information	24

Note: Water Source Technologies, LLC reserves the right to make changes, amendments, deletions, revisions and/or variations in and to the contents of this manual, at any time and without notice to the purchaser.

Water Harvester by Water Source Technologies

OPERATING YOUR ATMOSPHERIC WATER APPLIANCE

Your Water Harvester was installed and set up by a qualified technician certified by Water Source Technologies, LLC. We automatically enroll you in the manufacturer's warranty program. Your appliance has already been tested and is ready to create water from the air.

To insure the purest water possible, this appliance is intended to be plugged in and turned "ON" 24 hours a day.

Please familiarize yourself with this manual. Your Water Harvester should give you years of trouble-free operation while producing the maximum amount of pure, high-quality, drinking water.

INTRODUCTION

Thank you for purchasing the "**Water Harvester 75**". This appliance uses the most sophisticated technology available in the Atmospheric Water Generation industry today. We have designed the **Water Harvester 75** with one objective in mind: to produce the maximum amount of high quality drinking water while using only a minimum amount of electricity.

SAFETY NOTES

- The electrical outlet to which the appliance is connected should be equipped with a reliable local or central ground fault interrupt circuit which is properly grounded. If the purchaser does not possess a ground fault detector (available as part of many power strips presently on the market), have an electrician verify proper grounding at the outlet where the appliance will be installed.
- Never tamper with or remove the grounding terminal from the power cord plug.
- Do not use extension plug, extension adaptor, or grounding adapter with the appliance.
- Always protect the appliance from contact with poisonous gas or liquid and/or corrosive gas or liquid.
- If the power cable or the cable plug has become damaged, do not use the appliance until proper repair or replacement has been completed by a competent repair person.
- Always unplug the power cord before performing any maintenance on your appliance.
- Do not power the appliance from an electrical outlet to which other high power consumption appliances or devices have been attached.
- Always use correct replacement parts recommended by the manufacturer.
- Do not insert or unplug the power cord with wet hands or while in contact with another grounded device, appliance, or a radiator.
- Use the enclosed water pipe kits to connect the unit to a city water supply. Do not supply water to the unit from any input source whose potable quality is not known to the user.
- Before transporting the appliance long distances, always unplug the power cord and **completely empty water from all tanks**. Take care to avoid tilting the machine more than 20° during moving. Using two

OWNER'S MANUAL

persons allows the unit to be moved more easily.

PRECAUTIONS

- For best performance, please allow a minimum of 8 inches on all sides of the appliance.
- The **Water Harvester 75** is not designed or warranted for operation outdoors, regardless of whether it will be protected from the elements.
- Avoid exposing the appliance to prolonged direct sunlight.
- The appliance should be placed into operation only when it is standing upright on a level surface.
- Supplied voltage during operation must not drop more than 10% below the rated 115-120 volts of standard power supply, as in a brownout situation. When the appliance operates below this level, it becomes noisy and may overheat. Immediately switch off and unplug the appliance until the voltage returns to normal.
- Avoid direct eye exposure to the ultraviolet device which is part of this unit. Ultraviolet light from any source may permanently damage the eye.
- Prevent children from playing with the HOT button to avoid scalding.
- This appliance is not suitable for use at places where the appliance will get wet. Do not spray water on the appliance to clean.
- To prevent the appliance from damage caused by freezing, drain off the remaining water and turn off the appliance if the surrounding temperature will be below 0°(32°F).
- If there is any damage to the power cables, the cables must be repaired or replaced by an authorized person to avoid danger of electric shock.
- Before attempting to operate the appliance on uneven or non-level surfaces, a suitable leveling device should be affixed to the unit.

MAINTENANCE

- Always keep the unit clean. Wipe the outer casing with a soft, damp, but not wet, micro-fiber or similar cloth. Use water to clean. Avoid using any harsh or abrasive cleaning agent.
- Do not use any cleaning agents to clean the storage tanks.
- Clean the air filter regularly to ensure proper air flow.
- Always drain the water from the tanks before any period of long inactivity.

WHAT AN ATMOSPHERIC WATER APPLIANCE DOES FOR YOU!

It is important to be aware that your Water Harvester is a humidity and temperature driven appliance. This means the ability of the appliance to generate water depends totally on the level of humidity in the air and the temperature to produce water. Ideally, the humidity level should be at least 50% or above to achieve the machine's **optimum** performance. In places with lower humidity levels, the appliance will still produce water, but not as quickly. This appliance performs well in an air conditioned room.

Your Atmospheric Water Appliance

- creates pure drinking water
- Dehumidifies in the immediate environment.
- Purifies the air in the immediate environment.

FEATURES OF THE ATMOSPHERIC WATER APPLIANCE

Microcomputer

The microcomputer ensures proper working of internal parts, regulates hot or cool water temperature settings, and supervises and controls the functionality of individual internal working parts.

Electronic Sensors

Various electronic sensors are attached to parts such as the UV light, heating mechanism and storage tanks. These sensors ensure that all parts are working properly and warn you of a malfunction or performance issue.

Energy Saving Features

To conserve electricity, electronic sensors have been placed in the storage tank to automatically stop the machine from making more water when the tank is full and when hot/cold water reaches the preset temperature settings.

Child-Proof Hot Water Lock Out

The function of hot water lockout is to prevent children from scalding/burning upon touching the water tap.

Venturi Fan

Newly designed Venturi-type fan increases production efficiency and greatly reduces noise during operation.

Water Leakage Detector

In case of any unexpected situation of water leakage, the machine will stop working automatically. Shutdown is accompanied by a warning sound and flashing VFD.

Condensing Coils

The condenser is designed with a special food-contact grade coating to prevent any direct metal contact with the water and to improve water production efficiency.

Electrostatic Air Filter

The first filter that air passes through before being condensed and converted to water is electrostatic; our electrostatic air filter effectively prevents micro-particles and dust from entering the machine, as well as deterring slime and fungus growth.

Ultraviolet Treatment

The proprietary ultraviolet lamp treats the water by sterilization to ensure the bacteria and microorganisms are effectively eliminated. The sterilization process is automatically controlled by the microprocessor.

Multi-Stage Filtration System

Our dedication to providing high-quality, great tasting water to our consumers is accomplished by our unique multi-stage filtration system.

LF2 Carbon Filter or Nanometer Molecular Sieve

Removes ammonia, chlorine residuals, organic compounds, soil particles, dirt, etc.

Sediment Filter

Removes micro-particles to protect the water pump.

Oxidation Reduction Filter I

Removes organic compounds, free chlorine, heavy metals, etc.

Oxidation Reduction Filter II

Removes organic compounds, free chlorine, heavy metals, etc.

Reverse Osmosis Membrane

Removes bacteria if present, viruses, mineral salts, heavy metals, organic compounds, etc.

Post-Carbon Filter

Removes volatile organic compounds and improves water taste and smell.

Top Tank UV Sterilization

Minimizes bacteria levels in the upper tank to the least possible number.

Water Output UV Sterilization

Ensures clean and safe water is dispensed from the cool water faucet.

Water Recirculation

Our patented proprietary technology ensures that stored water remains fresh and clean and avoids secondary pollution during storage.

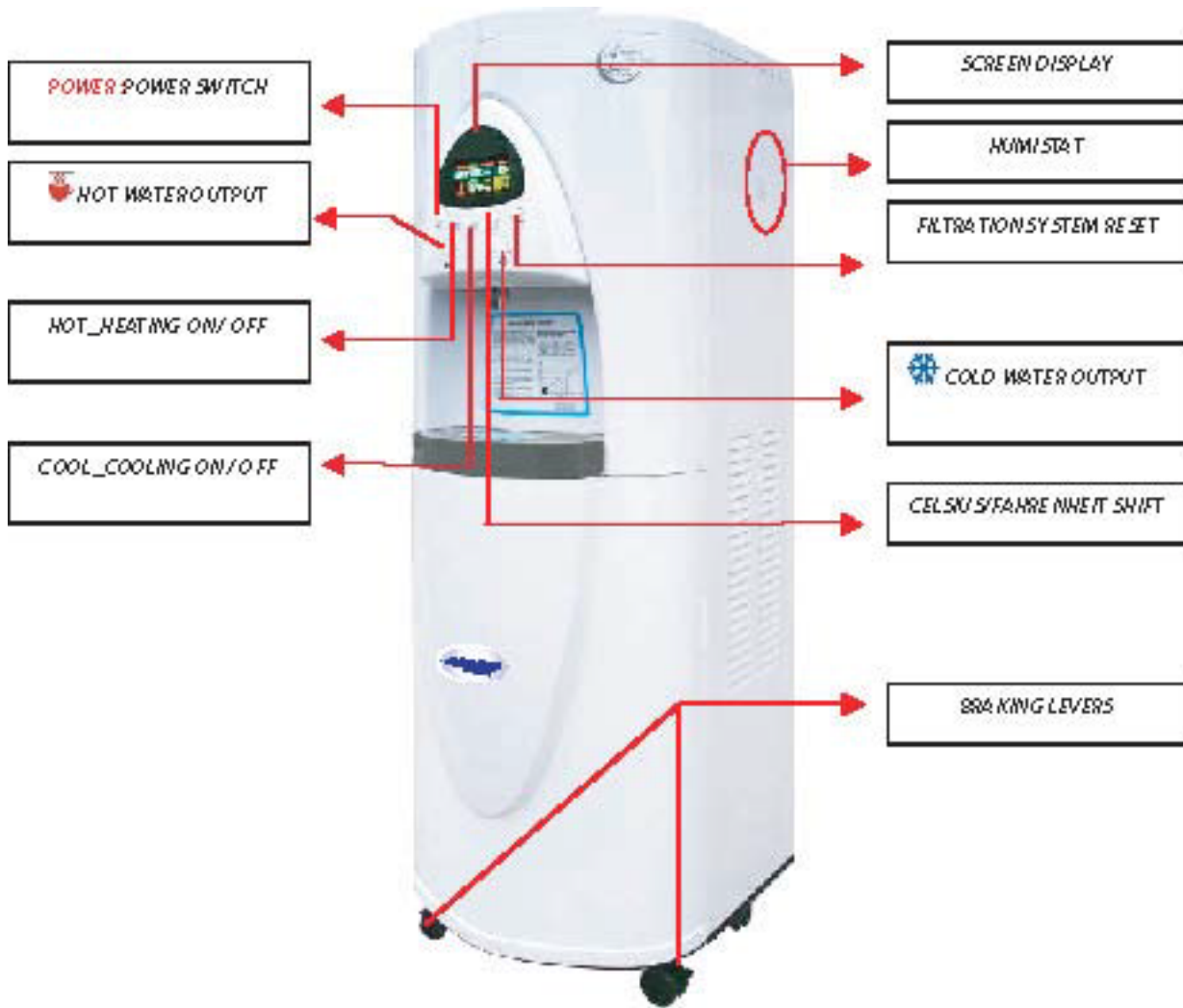
Overheat Protector

Overheat protector offers further protection for your appliance. In case of overheating in the heating chamber during the heating process, the heating device will automatically turn off.

Novel and Noble Body

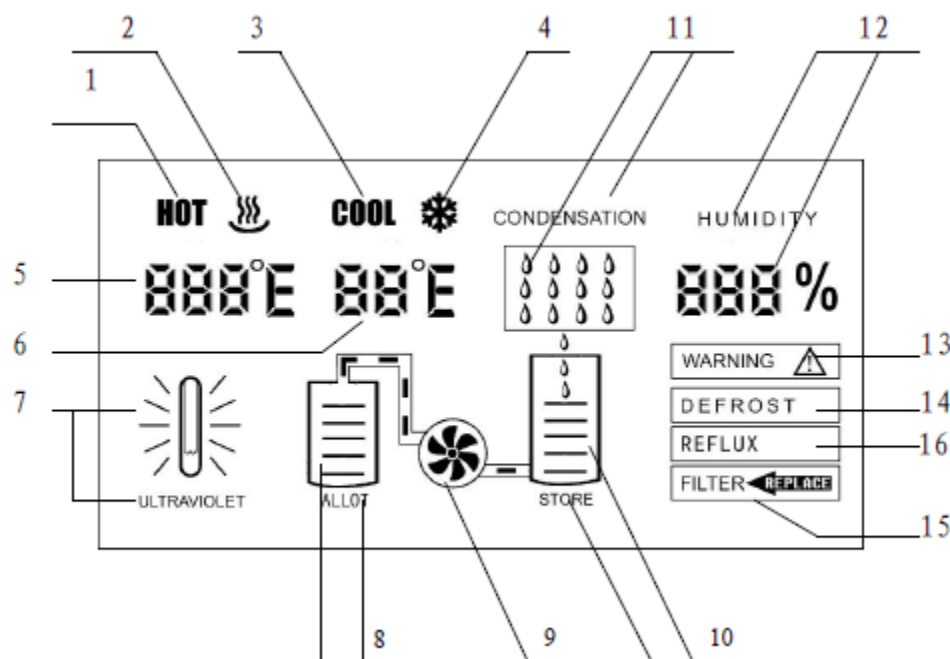
The Atmospheric Water Appliance has a smaller and sleeker design compared to other Atmospheric Water Appliances on the market. Our appliance is more compact and versatile. The advanced VFD display was added to make the operation, air humidity and water quality conditions more clearly understood by the owner.

OWNER'S MANUAL



Water Harvester

Understanding the Visual Function Display (VFD)



1. **Hot Water Indicator** When hot water lock is unlocked, this logo will flash
2. **Heating Icon** Heating function is on when the icon stays lit, the unit is heating when the icon flashes
3. **Cool Water Indicator**
4. **Cooling Icon** Cooling function is on when the snowflake icon stays lit, the unit is cooling when the snowflake icon flashes
5. **Hot Water Temperature** Displays the current temp of the water in the hot tank.
6. **Cool Water Temperature** Displays the current temp of the water in the chilled tank.
7. **Top Tank UV Lamp Icon** The UV is working well when the icon stays on. If it blinks, UV is not functioning properly.
8. **Water level indicator of upper tank.** One solid line per quarter tank
9. **Booster Pump Icon** The pump is working when the icon flashes
10. **Water Level Indicator of Bottom Tank A** One solid line per quarter tank
11. **Water Generating Icon** The appliance is generating water when rain drops fall
12. **Humidity** Displays the current humidity level by the appliance
13. **Warning Icon** Operation is normal when the icon remains on; the icon will flash when fault is detected.
14. **Defrost Icon** The appliance is in defrost mode when the icon flashes (There could be frost because of low temperature in some areas)
15. **Filter Icon** Conditions are normal when the icon is lit. When it flashes, the filter should be cleaned or replaced. Please refer to the section on **CLEANING, STERILIZATION & REPLACEMENT** for details.
16. **Water reflux (Recirculation) Icon** Water recycling is on when the icon flashes

OPERATION

Each time the Water Harvester is plugged in

When the appliance is first plugged into electric service, it will "beep" and the digital display VFD will illuminate. The compressor will begin running in 2 minutes.

Turn off the appliance

To turn the appliance off, press and hold the POWER button until it "beeps" and the VFD turns off.

Turn on the appliance

To turn the appliance on, press and hold the POWER button until it "beeps" and the VFD turns on.

Activate Hot Water

Press and release the HOT button. The appliance will "beep" and the "🔥" to the right of the word HOT will illuminate. It is heating the water when the "🔥" is flashing.

Deactivate Hot water

Press and release the HOT button. The appliance will "beep" and the "🔥" to the right of the word HOT will disappear.

Activate Chilled water

Press and release the COOL button. The appliance will "beep" and the "❄️" to the right of the word COOL will illuminate. It is cooling the water when the "❄️" is flashing.

Deactivate Chilled water

Press and release the COOL button. The appliance will "beep" and the "❄️" to the right of the word COOL will disappear.

Setting the temperature of the hot and chilled tanks

Press and hold the C/F button until the appliance beeps and the "F" or "C" to the right of the Hot water temperature flashes. The current setting for the HOT water is displayed. Then press "HOT" or "COOL" buttons to adjust the setting. Press "HOT" to raise the temperature setting; press "COOL" to lower the temperature setting. Hot water adjustment range is 75°C(167F)~93°C(199F). **To adjust the cool water temperature setting,** press C/F **again** and the "F" or "C" to the right of the Cool water temperature flashes. The current setting for the COOL water is displayed. Then press HOT or COOL buttons to adjust the temperature. Press "HOT" to raise the temperature setting; press "COOL" to lower the temperature setting. Cool water adjustment range is 4°C(39F)~15°C(59F).

Switching between Celsius and Fahrenheit

Press C/F button to switch the temperature display between Celsius and Fahrenheit.

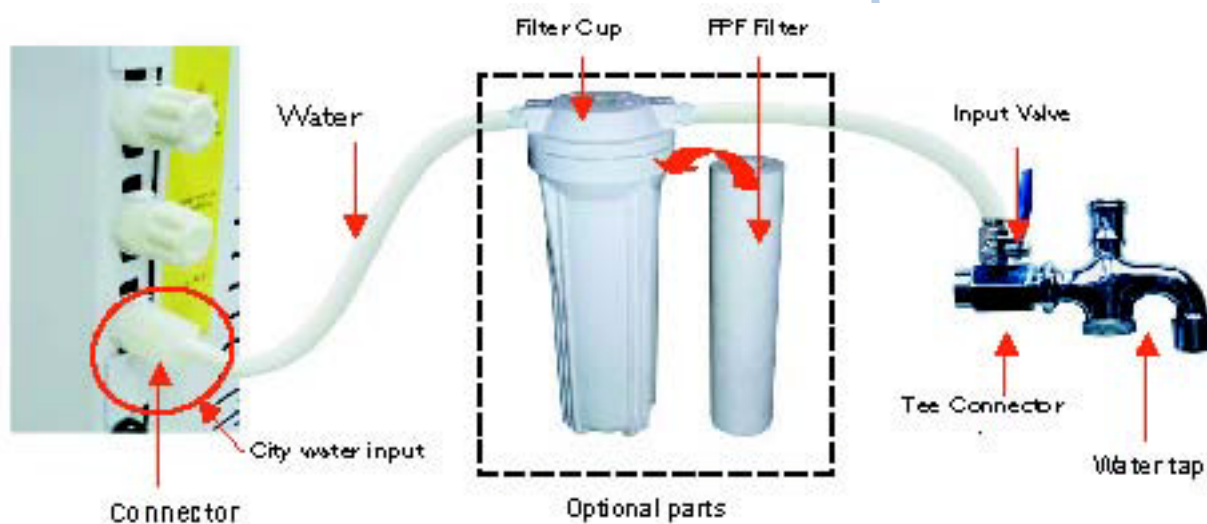
Filter/ UV Replacement- no service agreement

If you have purchased the Water Harvester from Water Source Technologies, we will email or mail a filter reminder to the last known address. You can request an automatic shipment of the recommended filters and UV at the recommended intervals by calling 877.860.1106 or emailing customerservice@watersourcetechologies.com.

If you have adopted the Water Harvester from a private party and need to purchase the recommended replacement filters and UV or wish to enroll in a service plan please call 877.860.1106 or email customerservice@watersourcetechologies.com.

Filter/UV Replacement- Service agreement

We will email or mail a service call reminder two weeks before the recommended interval. The service agreement covers recommended filter, UV changes, UV test, System cleaning, Coil cleaning and refrigerant check.



Connecting to a municipal water system

This appliance is designed and capable of connecting to a municipal water source and act as a water filter. This is not recommended as it will shorten the life of the filters and contaminate the filters with chemicals and pharmaceuticals which may be in the ground water. The water pressure from the municipal water will automatically deactivate creating water from the AIR.

Defrost

The "DEFROST" indicator on the screen will blink and the appliance will automatically defrost the coils when

the environmental temperature is too low. To check the temp of the condensing coils, press and hold the "COOL" button until the humidity level is replaced with F##.

Dispense Chilled Water

Press and hold the "❄️" button to dispense chilled water. Release the "❄️" button when you have dispensed the desired amount.

Dispense Hot Water

The Water Harvester has a child safety hot water lockout feature.

Press and Hold the HOT button until the HOT indicator blinks and the appliance beeps; then within 4 seconds press and hold the "🔥" button to dispense hot water. Release the "🔥" button when you have dispensed the desired amount.

Energy Efficiency

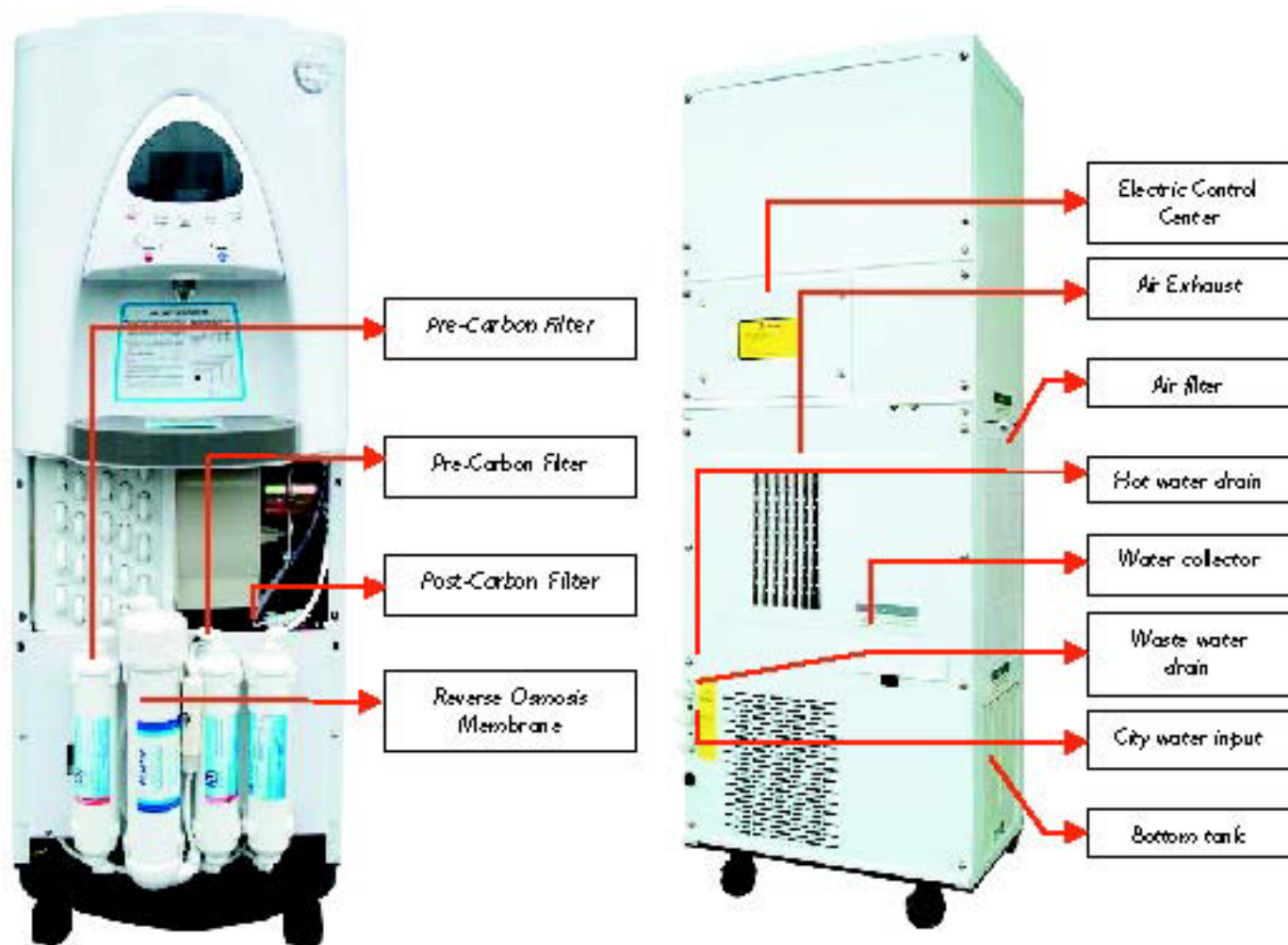
To conserve energy, your machine has an electronic sensor which automatically switches the machine off when the storage tank is full.

CLEANING AND REPLACEMENT OF FILTERS

Recommended Timing for Filter Replacement may vary according to different users' water consumption levels. The time periods recommended below are based on 10 liters (2.6 gal) consumed on a daily basis:

1) LF2 Carbon Filter or Nanometer Molecular Sieve 6 months **2) Oxidation Reduction Filter I** 12 months **3) Oxidation Reduction Filter II** 12 months **4) Reverse Osmosis Membrane** 36 months **5) Post-Carbon Filter** 12 months
6) UV bulb 18 months or upon UV fault warning

Note: The above recommended service timing is for reference purposes only. After a long period of inactive service, we recommend that you replace the filters to ensure that your unit will always produce the cleanest and purest possible drinking water.

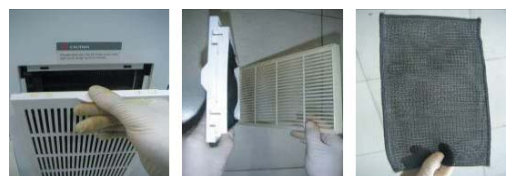


The above structure and filtration system is for your reference.

System Cleaning

Clean the Air Filter

To ensure proper air supply, please clean the air filter regularly according to air quality conditions in your environment. Take off air filter from the side as shown in pictures 1.1-1, 1.1-2, 1.1-3. Rinse in clean cold water to remove dirt and then replace.



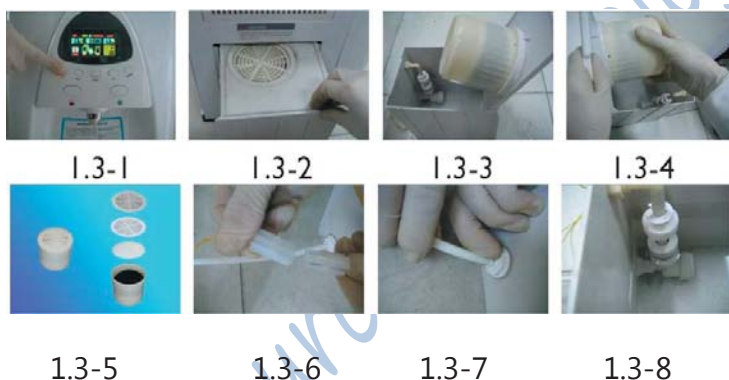
Cleaning of water collection tray

Take out water collection tray from the back of the Water Harvester. Clean and re-place in its original position.



Cleaning of bottom tank

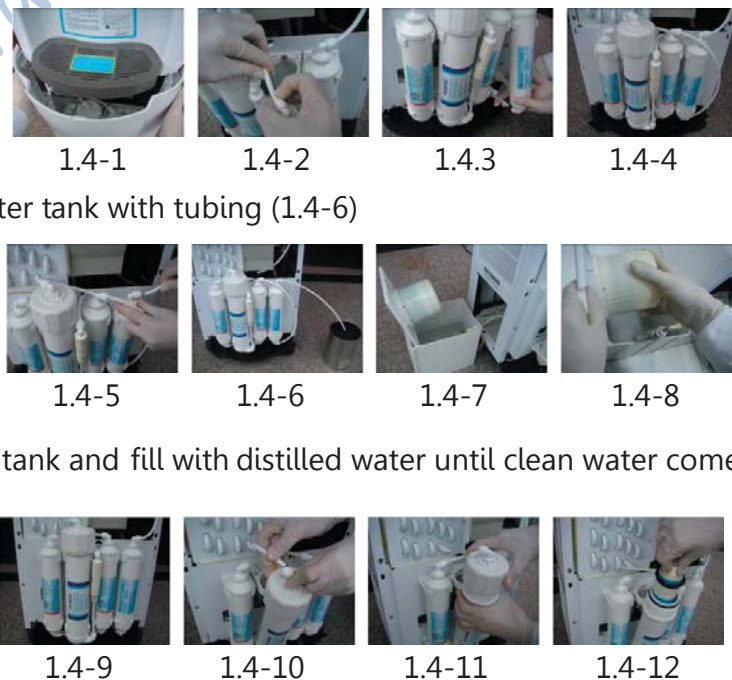
1. Press POWER to shut down the appliance as shown in (1.3-1). Unplug the power cord.
2. Take out bottom tank (1.3-2).
3. Open tank cover (1.3-3)
4. Remove filter cup (1.3-4).
5. Take out filter net, filter bracket, and filter fiber; rinse the filter cup with clean water (1.3-5).
6. Disconnect the pin of the bottom water sensor (1.3-6). Pull out water outlet tubing (1.3-7). (Note: press the front retainer ring inward and pull the water tube out)
7. Remove the small outlet filter and rinse with clean water (1.3-8). Make sure the filter net is in good condition, otherwise, replace with a new one. Thoroughly wipe off any sediment on the tank walls.
8. Re-assemble all parts.



Cleaning of Front filtration system

Note: This has been completed prior to your installation

1. Press POWER to shut down the appliance. Open front bottom cover (1.4-1)
2. Pull out water outlet tubing from the outlet connector of 2nd stage filter (1.4-2)
3. Pull out water inlet tubing from the inlet connector of 3rd stage filter (1.4-3)
4. Connect the outlet of 2nd stage filter to the inlet of 3rd stage filter with tubing. (1.4-4)
5. Pull out outlet tubing from the outlet of 3rd stage filter (1.4-5)
6. Connect the outlet of 3rd stage filter to a water tank with tubing (1.4-6)
7. Pull out bottom tank (1.4-7) remove cup filter (1.4-8) rinse the cup filter with clean water. Put the cup back. Fill bottom tank with distilled water.
8. Press the POWER to turn the appliance on and start cleaning the filtration system. Keep checking the water level of the bottom tank and fill with distilled water until clean water comes out.
9. Replace all the parts in their original positions (1.4-9). Make sure all connections are hand tight to prevent leakage.
10. Disconnect the tubing from RO inlet (1.4-10).
11. Remove RO cover (1.4-11)
12. Insert RO membrane into the cartridge (1.4-12). Pay careful attention to assure it has been inserted in the correct orientation shown.



13. Press the membrane onto the open end (1.4-13)



1.4-13

14. Place back the cover and tubing (1.4-14)



1.4-14

15. Replace the front panel (1.4-15). Switch on the unit and start cleaning the RO membrane by filling distilled water into the bottom tank until the top tank is full of water.



1.4-15



1.4-16

16. Press "❄️" to release .5 gal of cold water then press HOT to unlock, and press "🔥" to release (.5 gal) of hot water from each faucet respectively. Turn off the unit. Drain all remaining water from the hot water drain outlet in the rear of unit (1.4-16).

Sterilization

Note: This has been completed prior to your installation

1. Prepare sterilization Solution: prepare 10 liters (2.6 gal) of sterilization Solution (special Solution for water dispenser). It is recommended to use a standard USP hydrogen peroxide Solution.

2. Press POWER to shut down the appliance(2.1) open top cover (2.2) open top tank cover (2.3)fill the top tank with the Solution (2.4) replace and tighten the top tank cover and make it tight. Replace the top cover.



2.1



2.2



2.3

3. Turn on the unit. Press "❄️". Keep pressing HOT to unlock, and press "🔥" to release 1 Liter (.26 gal) of Solution from each faucet (2.5). Shut down the unit. Drain about 0.5 Liters (.13 gal) of the remaining Solution from the hot water drain outlet in the back. Keep the remaining Solution soaking in the top tank for more than 2 additional hours, or as indicated in the instructions accompanying the Solution.



2.4



2.5



2.6

4. Run the unit. Press "❄️". Keep pressing HOT to unlock then press "🔥" to release 2 Liters (.5 gal) of Solution from each faucet. Shut down the unit. Drain all remaining Solution from the hot water drain outlet in the back.

5. Fill bottom tank with distilled water. Turn on the unit and leave it run on automatic setting until the top tank is full of water.

6. Keep pressing HOT to unlock, and press "🔥" to release 2 Liters (.5 gal) of water from each faucet. Shut down the unit. Drain all remaining water from hot water drain outlet in the back (2.6).

7. Repeat the above steps in 5 and 6 in order to clean out the Solution remaining in the top tank. When the top tank is empty, repeat the entire sterilization cycle process one more time.

Parts Replacement

To replace a filter:

1. Press POWER to shut down the appliance (3.1-1) using both hands, remove front panel from the bottom (3.1-2).
2. Replace carbon filter by pulling out tubing at both ends (3.1-3, 3.1-4).
3. Replace RO membrane by pulling out tubing, removing cartridge cover, removing the membrane, and replacing it with a new one (3.1-5, 3.1-6, 3.1-7, 3.1-8).
4. Replace the front panel.



3.1-1



3.1-2



3.1-3



3.1-4

Note: It is recommended to replace filters one by one, in order. When replacement is completed, please clean the filtration system as indicated in the FILTRATION CLEANING section.

Replace the top main tank UV lamp

1. Press POWER to shut down the appliance and unplug power cable from outlet before replacing lamp (3.2-1).
2. Open top cover (3.2-2).
3. Remove screws on top end (3.2-3).
4. Disconnect UV connection pin (3.2-4).
5. Pull out UV bulb (3.2-5).
6. Replace with new bulb and replace top cover (3.2-6).



3.2-1



3.2-2



3.2-3



3.2-4



3.2-5



3.2-6

Replace the dispensing water UV lamp

1. Press POWER to shut down the appliance and unplug power cable from outlet before replacing lamp (3.3-1).
2. Open the top cover (3.3-2).
3. Remove foam cup of UV (3.3-3).
4. Remove black insulation cover (3.3-4).
5. Disconnect UV connection pin (3.3-5).
6. Pull out UV bulb (3.3-6).
7. Replace with a new bulb and replace all parts in reverse order.



3.3-1



3.3-2



3.3-3



3.3-4



3.3-5



3.3-6

Attention

- To assure reliable operation of the Appliance, it is recommended that you dispense no less than 1 gallon of water every day.

OWNER'S MANUAL

- If hot water is not dispensed routinely, it is recommended to turn on the heating process for not less than 30 minutes once a week. Press and hold HOT button to unlock, and press "☞" to release 2 cups of hot water from the dispenser.
- If the appliance has not been used to dispense water for between 2 to 5 days, please drain 2 cups of cool water before drinking. If the machine is to be inactive for more than 2 weeks, it is recommended that you drain the water from all tanks and switch off the machine. To re-activate, run the system to produce about 1.5 gallons of water and drain water from the back drain outlets.
- If the machine has not been in use for more than 14 days or it has been in continuous operation for 4 months, it is time to run a sterilization cycle. Please follow the steps in CLEANING, STERILIZATION & REPLACEMENT to sterilize the system.
- Turn off the power before draining water from the back outlets.

TROUBLE SHOOTING

Problem: No hot or chilled water

- ☞ Generally, the first heating/cooling will start within ten to twenty hours during the initial start up, depending on the temperature and humidity conditions.
- ☞ Heating or cooling will not occur if the water levels in the tanks are low or empty.
- ☞ Heating or cooling will not occur if those features are not turned on.

Problem: The UV WARNING light blinks and you hear three short beeps.

Solution: Check the ultraviolet device in the top tank to make sure the bulb is lit and all wiring is correct. If the UV is not working, replace with a new bulb by following steps in CLEANING, STERILIZATION & REPLACEMENT.

Problem: The whole UV WARNING logo blinks and you hear three short beeps.

Solution: Check the ultraviolet device at the cool water output to make sure the bulb is lit and all wiring is correctly engaged. If the UV is not working, replace with a new bulb by following steps in CLEANING, STERILIZATION & REPLACEMENT.

Problem: The machine does not work even after the power cord is plugged in.

Solution: Check the circuit breaker and test with another device to assure the outlet is live. Check to ensure the voltage being delivered to the outlet is in the correct operating range for the device. Make certain that the plug connection to the wall outlet is tight and secure and the cable is not damaged.

Problem: The indicator "REPLACE" on VFD display is blinking and beeping.

Solution: After a long period of operation, the filter might be dirty. If so, it must be replaced. Replace with a new filter by following the steps in CLEANING, STERILIZATION & REPLACEMENT. Reset the filtration warning time by following Step No. 7 in Section VII.c. of this Manual, OPERATION.

Problem: The system detected water leakage on the base. The red logo on the screen blinks and the system cannot produce water.

Solutions:

- Press the POWER button immediately and unplug the power cord.
- Make sure the tubing of the filtration system is tight and secure.
- Make sure the tubing of the bottom tank is tight and secure.
- Make sure the drainage tubing in the back is tight and secure.
- Make sure the water collector is in the correct position.

Problem: Remaining water cannot be drained out from the back outlets when cleaning top tank and hot tank.

Solution: Make sure the water stopper inside the water drain outlet is removed from or not blocking the drain opening.

Problem: There is a burning smell from the machine, and the hot temperature indicator has exceeded the preset temperature setting.

Solutions:

- Press the POWER button immediately and unplug the power cord.
- Stop draining immediately if you are performing the draining operation from the back. Wait a few minutes; then continue draining until the hot temperature indicator reads normally.

Problem: Water output from faucet is too small.

Solutions:

- Clean the filter net inside the water faucet or replace with a new one,
- Replace check valve inside the water faucet with a new one.

Problem: No hot or cool water output, ambient temperature water only.

Solutions:

The heating function will be activated only when the top tank water level on the screen is above two levels. The cooling function will be activated only when the top tank water level on the screen is above three levels.

Problem: the Water Harvester makes water at a slow rate, even after a prolonged period of operation.

Solutions:

- Make sure the appliance operating temperature is in the appropriate range.
- Check the humidity level in the room. Low humidity level results in less water production.
- Make sure that the hot/cold water spouts are not blocked.
- Make sure that the ingoing and outgoing air ventilation is not blocked;
- Check that the distance between the machine and the wall is not too close;
- Make sure that the power voltage is not too low or too high;

OWNER'S MANUAL

- Make sure that the internal booster pump is working well;
- Make sure that the water lines are not blocked and water flow is smooth;
- Make sure that the unit is placed in a well ventilated area, and that the air filter net is cleaned regularly to ensure the free air flow.

Problem: The humidity indicator on the screen is different from the actual room humidity level.

- It is normal for readings on such devices to differ in a range of 5%, more or less.
- Make sure the machine and the individual humidistat are placed in the same place.
- Make sure that the humidistat sensor is not blocked, covered or too close to the wall.

Problem: The machine is vibrating excessively and/or too noisy.

- Make sure there is no object placed on top of the machine.
- Make sure that there is no water cup placed on water tray.
- Open the front bottom panel and check if the copper tube at the side is touching the side panel. Correct the position of the copper tube slightly and slowly if it is.

If your machine still does not work or does not work correctly after all the above procedures have been performed, please do not try to perform other repair procedures yourself. Always call Water Source Technologies at 877.860.1106 and request a certified and properly trained service technician to examine the machine and perform necessary repair procedures. The manufacturer will not bear any responsibility for damages to the appliance, damages to the owner's property, or personal injury sustained during attempts at self-repair.

User repairs to the Appliance not specifically referenced and permitted in this Manual and/or use of replacement parts from sources other than Water Source Technologies or maintenance procedures other than as instructed or explicitly referenced herein voids all manufacturer warranties.

Technical Specifications Dimensions

Height	39.4 in (111 cm)
Width	15.4in (40 cm)
Depth	15.4in (40 cm)
Weight (unladen)	91lbs (41.2kg)

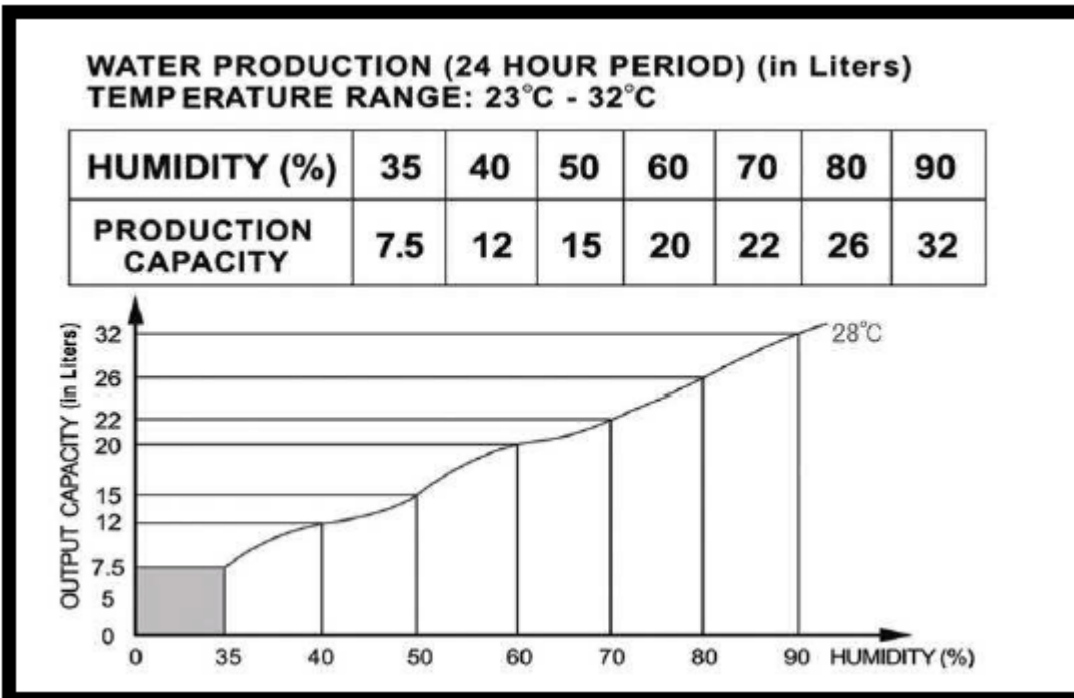
Power

Voltage	120 V 60Hz
Heating watts	500W
Operating watts	480W

System Specifications

Working Temperature	59F - 104F (15C – 40C)
Working Humidity	35% - 95%
Water Storage Capacity	3 gallons (12.5 Liters)
Temperature of Hot Water	167F – 199F (75C – 93C)
Temperature of Cold Water	37F – 50F (4C – 15C)

Atmospheric Water Production Capacity



Contact Information

www.watersourcetechnologies.com

E-mail: customerservice@watersourcetechnologies.com

Customer Service: 877.860.1160

Water Harvester by Water Source Technologies

OWNER'S MANUAL

- Activate Chilled water, 13
- Activate Hot Water, 13
- Attention, 21
- Child-Proof Hot Water Lock Out, 8
- Clean the Air Filter, 16
- CLEANING AND REPLACEMENT OF FILTERS, 15
- Cleaning of bottom tank, 17
- Cleaning of Front filtration system, 17
- Cleaning of water collection tray, 16
- Condensing Coils, 9
- Connecting to a municipal water system, 14
- Contact Information, 25**
- Deactivate Chilled water, 13
- Deactivate Hot water, 13
- Defrost, 14
- Dispense Chilled Water, 15
- Dispense Hot Water, 15
- Each time the Water Harvester is plugged in, 13
- Electronic Sensors, 8
- Electrostatic Air Filter, 9
- Energy Efficiency, 15
- Energy Saving Features, 8
- FEATURES OF THE ATMOSPHERIC WATER APPLIANCE, 8
- Filter/ UV Replacement- no service agreement, 14
- Filter/UV Replacement- Service agreement, 14
- INTRODUCTION, 6
- LF2 Carbon Filter or Nanometer Molecular Sieve, 9
- MAINTENANCE, 7
- Microcomputer, 8
- Multi-Stage Filtration System, 9
- Novel and Noble Body, 10
- OPERATING YOUR ATMOSPHERIC WATER APPLIANCE, 6
- Overheat Protector, 10
- Oxidation Reduction Filter I, 9
- Oxidation Reduction Filter II, 9
- Post-Carbon Filter, 9
- Power, 24
- PRECAUTIONS, 7
- Replace the dispensing water UV lamp, 20
- Replace the top main tank UV lamp, 20
- Reverse Osmosis Membrane, 9
- SAFETY NOTES, 6
- Sediment Filter, 9
- Setting the temperature of the hot and chilled tanks, 13
- Sterilization, 18
- Switching between Celsius and Fahrenheit, 14
- System Specifications, 24
- Technical Specifications Dimensions, 24
- To replace a filter, 20
- Top Tank UV Sterilization, 9
- TROUBLE SHOOTING, 21
- Turn off the appliance, 13
- Turn on the appliance, 13
- Ultraviolet Treatment, 9
- Understanding the Visual Function Display (VFD), 12
- Venturi Fan, 8
- Water Leakage Detector, 8
- Water Output UV Sterilization, 10
- Water Recirculation, 10
- WHAT AN ATMOSPHERIC WATER APPLIANCE DOES FOR YOU!, 8